

USB CONNECTION GUIDE

The new RTS200 is equipped with an USB interface. The CD-ROM contains the required drivers. With the provided drivers, the device will be installed as a serial COM port under Windows.

The current software version (V1.22) only supports COM1 and COM2 as serial connections, so the new serial port will have to be configured as one of these ports (Control panel->System->Device Manager).

In future software releases, the USB port will be supported directly from the application, so there will be no need to configure the operating system.

This document describes a step-by-step guide to connect the RTS200 through the USB interface.

1. HARDWARE CONNECTION

Use a standard USB cable (as the one supplied with the RTS200 kit) to make the connection between the Host running the application and the RTS200. Once installed, it is convenient to connect the RTS200 always in the same computer USB port, so there is no need to reinstall the USB drivers.

2. DRIVER INSTALLATION

FTDI's CDM drivers provide both D2XX and VCP functionality through a single driver on PCs running the following Windows operating systems:

- Windows 2000
- Windows XP
- Windows Server 2003

The files included in a standard 32-bit CDM release are:

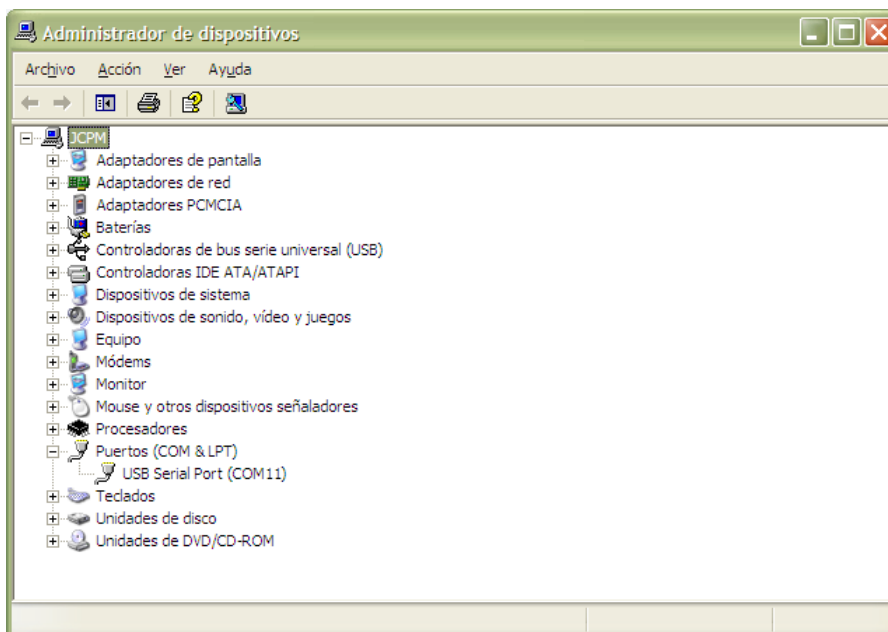
- Installation files
 - FTDIBUS.INF
 - FTDIPOINT.INF
- Driver files
 - FTDIBUS.SYS
 - FTSER2K.SYS
- Uninstaller
 - FTDIUNIN.EXE
 - FTDIUN2K.INI
- D2XX Interface
 - FTD2XX.DLL
 - FTD2XX.LIB
 - FTD2XX.H

The driver installation procedure is as follows:

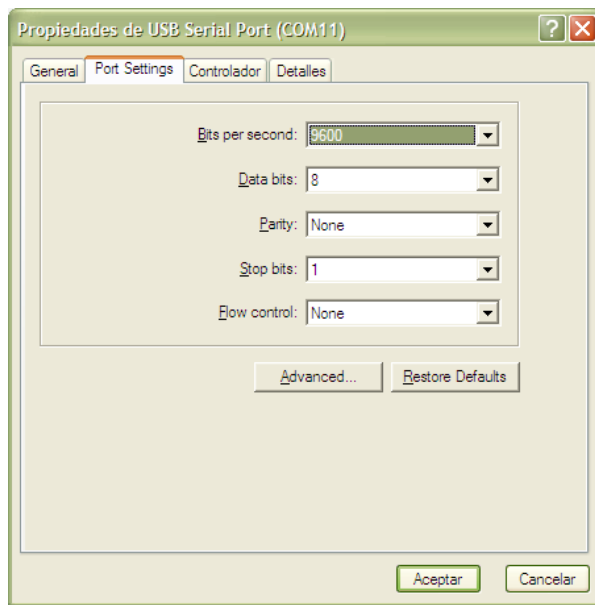
3. WINDOWS CONFIGURATION

The new serial port has to be configured in WINDOWS either as COM1 or COM2. To do that, follow the procedure:

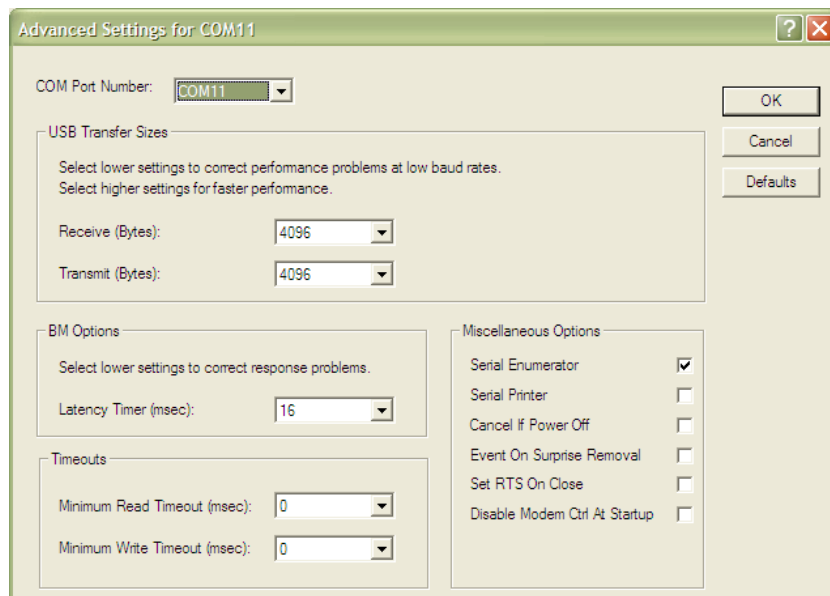
- a.- Connect the RTS200 through the USB serial port to the computer
- b1.- If windows recognizes the new hardware, a message will appear with a text similar to “your new hardware is ready to be used”.
- b2.- If windows does not recognize the device, it will ask for a driver. You’ll have to select the Driver folder in the supplied CDROM.
- c.- Windows will select one virtual serial port. The software current version only supports COM1 or COM2, so if Windows selects any other, it will have to be changed. To check the port configuration, and change it if needed, open Control Panel->System->Hardware->Device manager. The new serial port will appear under PORTS (COM & LPT):



- d.- In this case it was configured as COM11. To change it, double click on it:



and open the Port Settings tab, and then press the Advanced... button. The following window appears:

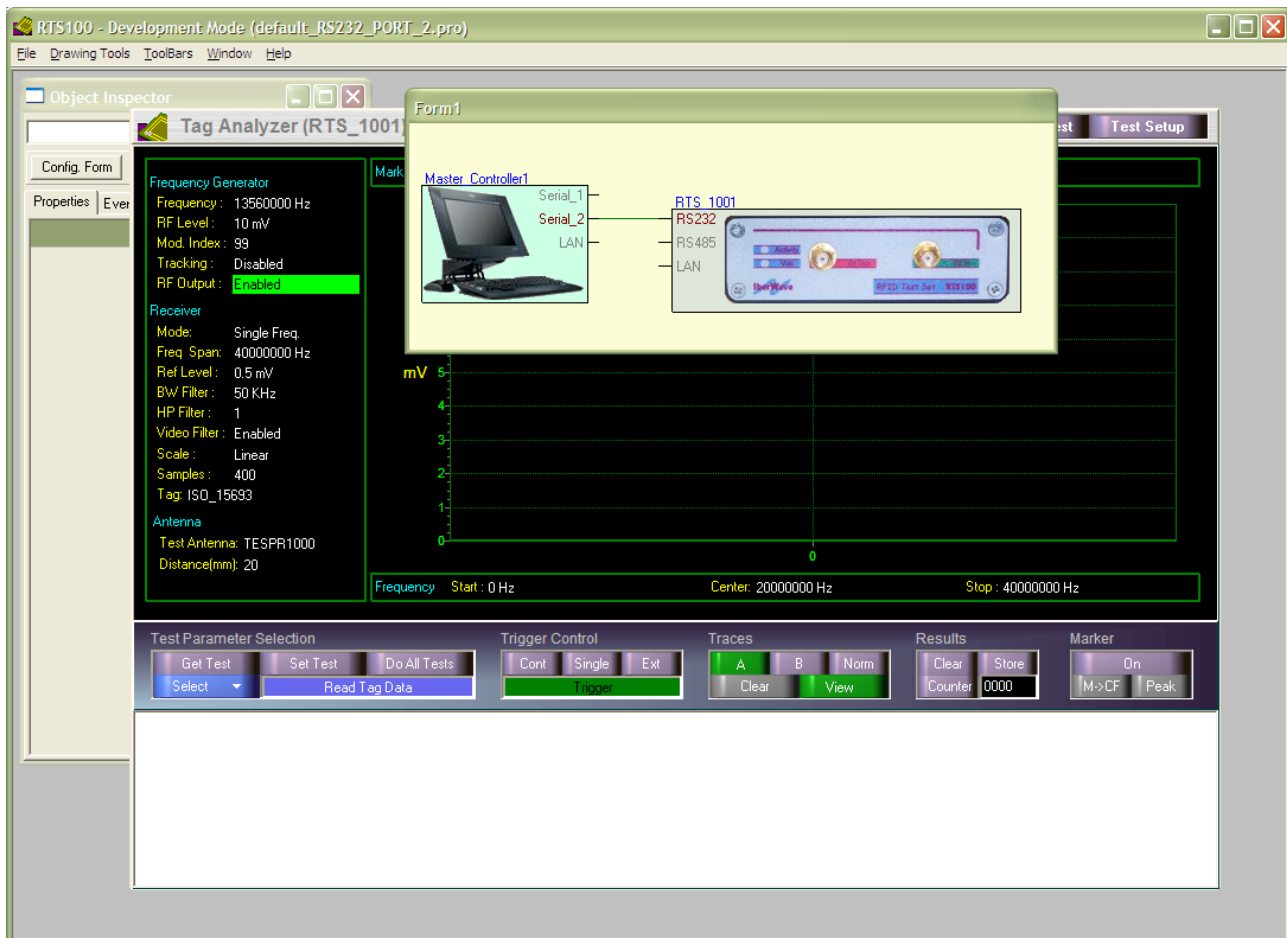


Select COM1 or COM2 in the COM Port Number selection box (if they are already in use, you'll have to change one of them before being able to select it here). If it is possible, select the COM as fixed so it does not change next time you start your computer.

4. SOFTWARE CONFIGURATION

The IBW_RTS software has to be configured to use the same COM as defined in the Windows Configuration (either COM1 or COM2). To do that, run the software, and open the corresponding pre-defined project, either default_RS232.pro or default_RS232_PORT_2.pro, with the File->Open Project option in the application main menu.

The graphical configuration screen should show the following image:



5. COMMUNICATION VERIFICATION

It is possible to check the communication between the host and the RTS200 with a terminal application, like windows hyperterminal. Just run the application, and select the right serial port, as configured in section 3.

Select New connection, and choose COM1 or COM2 in “connect using” selection box. The port selected in section 3 should be available there. Otherwise go back to sections 2 and 3.

Once the connection is open, write the characters:

\$GV

Followed by ENTER. This corresponds to the GET VERSION command in the RTS200 protocol, and there should be an answer from the RTS200 in the screen.