






## EM200 Ethernet Module

**Tibbo**  
TECHNOLOGY

### Features

-  10/100BaseT Ethernet port
-  Four LED control lines
-  One TTL serial port
-  Compact (32.1x18.5x7.3mm)
-  Five additional I/O lines



### About

The EM200 is Tibbo's second-generation serial-to-Ethernet module. It is similar to the EM120 device, but has a 10/100BaseT Ethernet port and much smaller dimensions.

The EM200 is not a sealed (potted) product. Its metal shell is used primarily for heat dissipation.

The EM200 is offered with Tibbo Device Server Toolkit software, which includes Virtual Serial Port Driver for Windows and Linux.

This product can also be supplied (loaded) with TiOS firmware and work as a simple BASIC-programmable module.

### Specifications

- 10/100BaseT, auto-MDIX Ethernet port (no magnetics).
- TTL serial port (TX, RX, RTS, CTS, DTR, and DSR lines).
- Five additional I/O lines.
- Four control lines for status LEDs.
- Power: 220mA @ 5V.
- Dimensions: 32.1x18.5x7.3mm.
- Firmware is upgradeable through the serial port or network.

### Functionality

#### Serial-over-IP Firmware

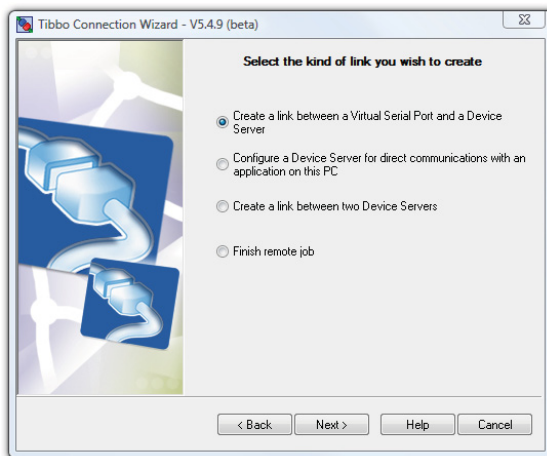
- Full- and half-duplex serial port modes.
- Server, client, and server/client network ("routing") modes.
- 8KB data buffers (one in each direction).
- Configuration stored in the EEPROM.
- Detailed status indication via external LEDs.
- Setup through the serial port or network (UDP, Telnet).
- Remote control of all I/O lines including RTS, CTS, DTR, and DSR.

## Functionality (continued)

### Serial-over-IP Firmware (continued)

- “On-the-fly” commands for immediate serial port configuration.
- Serial-side “modem” commands for network connections control.
- Direct control of ADSL modems.
- Supports UDP, TCP, ARP, ICMP (ping), DHCP, PPPoE, LCP.

## Tibbo Device Server Toolkit (TDST) Software



All Tibbo device servers are supplied with free software which includes:

**Connection Wizard:** guides you step-by-step through creating data links between a computer and a device server, or between two device servers.

**DS Manager:** used to locate, setup, manage, monitor, and upgrade Tibbo device servers and compatible devices.

**Virtual Serial Port Driver (VSPD):** turns serial ports of Tibbo device servers into remote COM ports of your PC.

**Tibbo Monitor:** logs the activity of Virtual Serial Ports.

For more information, see <http://soi.tibbo.com/tdst.html>